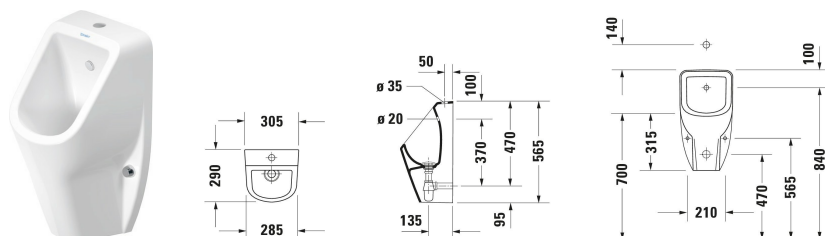


D-Code Urinal # 082830..00

| < 305 mm > |



Urinal	Dimension	Weight	Order number
Flushing rim: Rimless, Flush principle: Jet nozzle, Flush construction: washdown model, Inlet supply position: Top, Incl. intake set, Incl. mounting material, Outlet drain: horizontal, Concealed outlet, Incl. air trap, Incl. jet nozzle, Dimensions of water supply connection: 1/2"			
Colors			
00 White Alpin 20 HygieneGlaze (an antibacterial ceramic glaze that provides almost indefinite effectiveness)			
Variant			
White High Gloss	305x565 mm	14.600 kg	082830..00
Infobox			
In combination with adjustable flushometers without ventilation / For flushometers with a distance of 50 mm from wall to centre flush pipe			

All drawings contain the necessary measurements which are subject to standard tolerances. They are stated in mm and are non-binding. Exact measurements, in particular for customised installation scenarios, can only be taken from the finished piece.